

www.bfmitaly.it

COSTRUTTORI MACCHINE AGRICOLE FARM MACHINERY BUILDER

PARTICULARLY SUITABLE FOR
VINEYARDS | ORCHARDS | OLIVE GROVE | NURSERIES

B1 IN-ROW AUTOMATIC TILLER



B1

IN-ROW AUTOMATIC TILLER



The In - Row Automatic Tiller - quickly and safely tills the soil directly under vines or trees that are planted in a row. Thanks to a new automatic sensor and the ease of operation this tilling machine allows in-row cultivation tasks to become simplified. Equipped with a control to adjust the inclination of the tiller head, this machine can adapt to a wide variety of un-even working surfaces. The BFM tiller leaves a clean and uniform tilled soil surface, eliminating the terracing effect that other types of in-row cultivation can create. In addition, full mechanical adjustments allow the control of tilling depth, thus resulting in a perfect cultivation under the row of vines or trees.

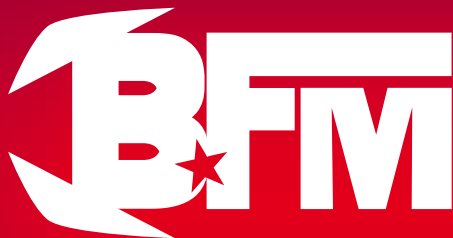
STANDARDS FEATURES

PTO SHAFT | VARIABLE TILLER WIDTH (YOUR CHOICE) FROM 11.8 - 17.7 - 23.6 O 29.5 INCHES | ADJUSTABLE WORKING WHEEL TO REGULATE TILLING DEPTH
 REMOTE INDEPENDENT LEVEL CONTROLS | ADJUSTABLE HYDRAULIC SENSOR ROD

ACCESSORIES

LATERAL ASSEMBLY PLOW | LATERAL ASSEMBLY BLADE KIT | ARM ASSEMBLY GRASS CUTTER | TILLER HEAD AVAILABLE FOR THE WORK BETWEEN PLANTS
 SPACED AS NARROW AS 15,7 INCHES | ELECTRIC INDEPENDENT LEVEL CONTROL (MOD.RAITERI) | TILLER SUPPORT SHAFT STRONGER (ONLY ON REQUEST)

LOOMS	SMALL	MEDIUM	LARGE	EXTRA LARGE
ROW WIDTH	4,5 - 5,3 INCHES	5,9 - 7,2 INCHES	7,9 - 9,8 INCHES	14,7 - 16,3 INCHES
WORKING WIDTH	11.8/17.7/23.6/29.5 INCHES	11.8/17.7/23.6/29.5 INCHES	11.8/17.7/23.6/29.5 INCHES	11.8/17.7/23.6/29.5 INCHES
TILT	30°	30°	30°	30°
WEIGHT	160 KG	190 KG	210 KG	240 KG
POWER	20 CV	25 CV	25 CV	25 CV
OPENING FROM THE CENTER OF THE TRACTOR	37.4 INCHES	43.3/57 INCHES	61/66.9 INCHES	78.7/100.3 INCHES



COSTRUTTORI MACCHINE AGRICOLE FARM MACHINERY BUILDER

INFO@BFMITALY.IT T +39 0173 970453 F +39 0173 959397
 VIA SANTO STEFANO ROERO, 75 · 12043 CANALE (CN) ITALIA

www.bfmitaly.it